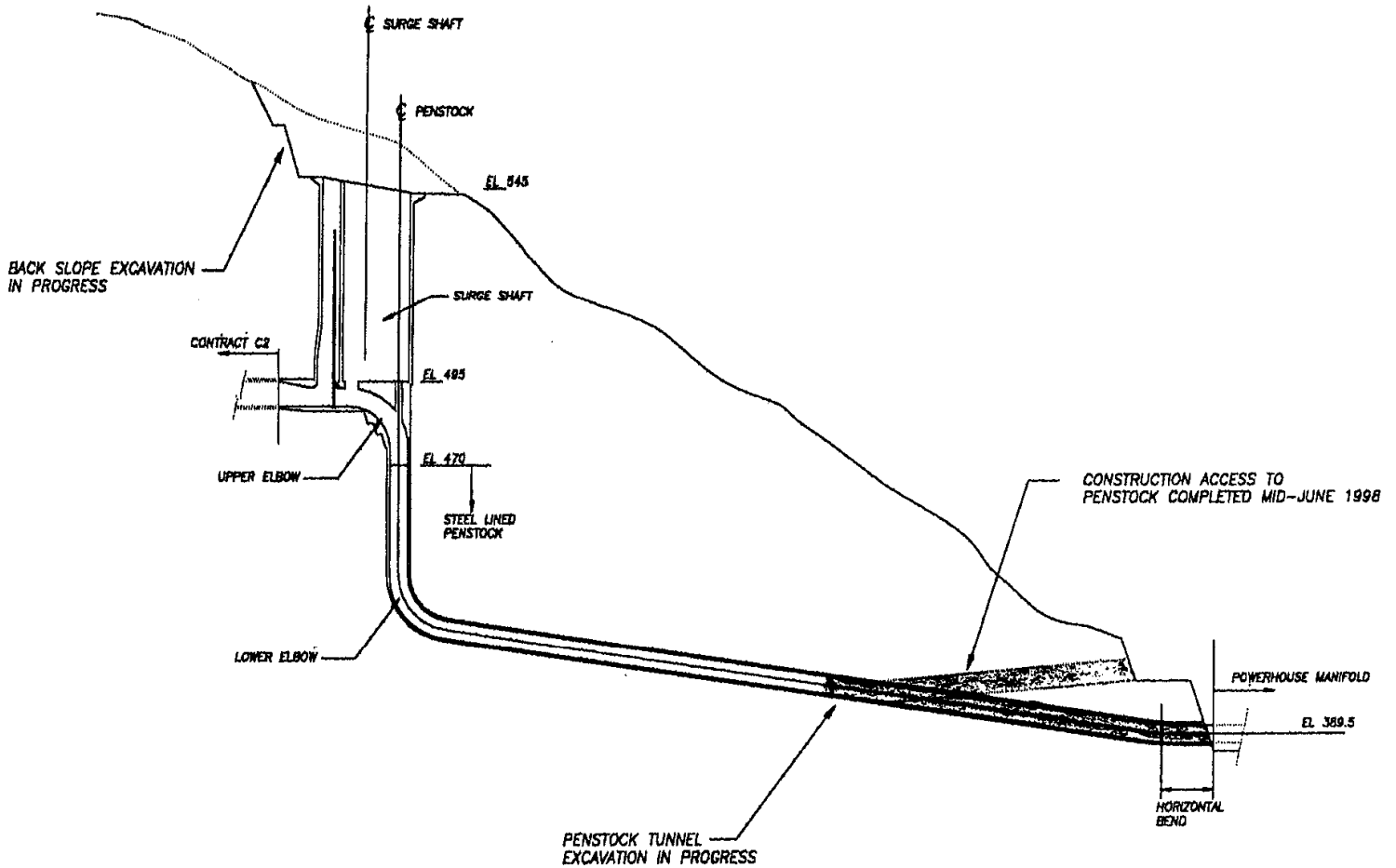


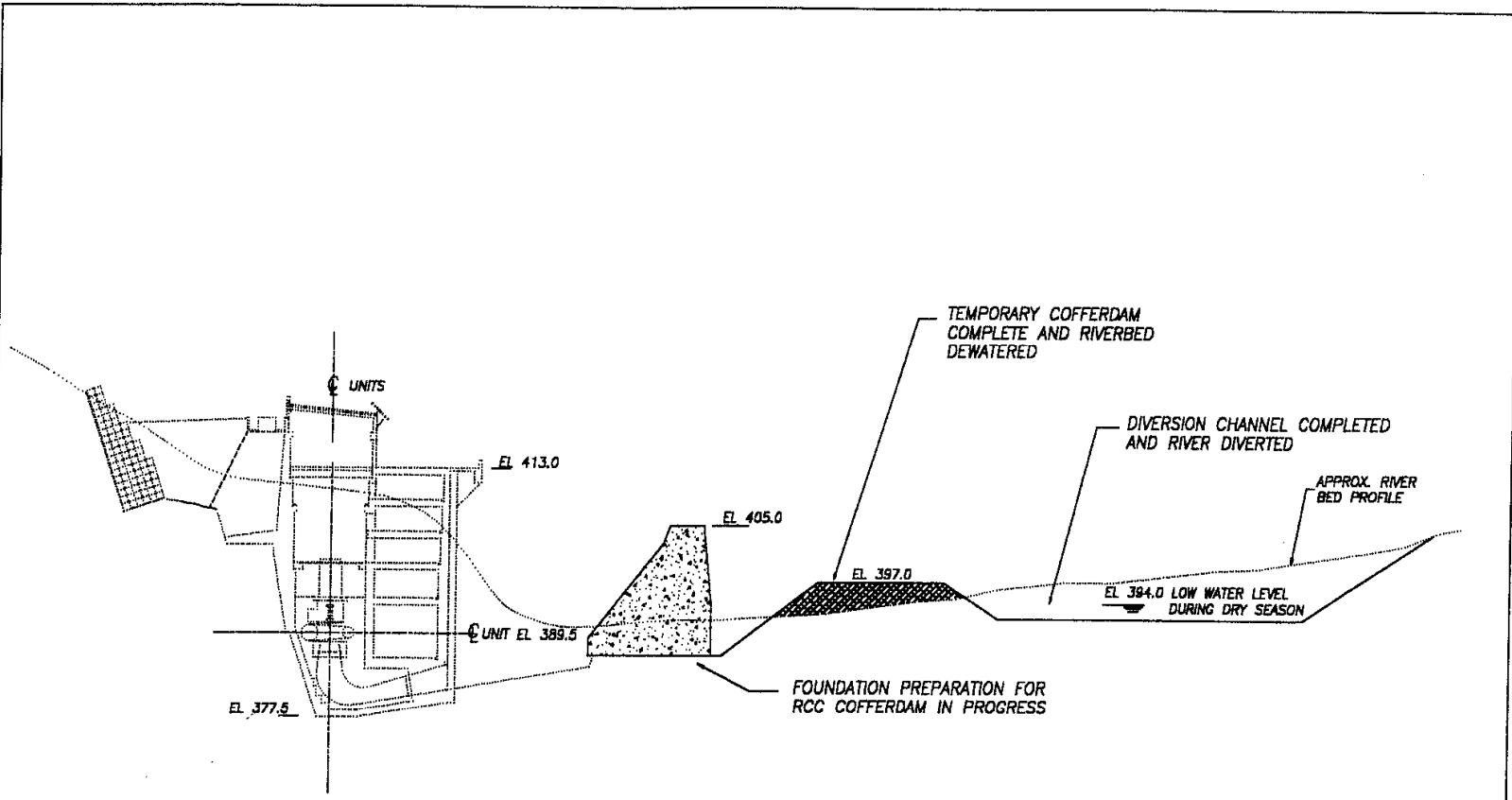
**Nepal Electricity Authority  
Kali Gandaki "A" Hydroelectric Project**

STATUS OF SURGE SHAFT AND PENSTOCK  
MARCH 1998



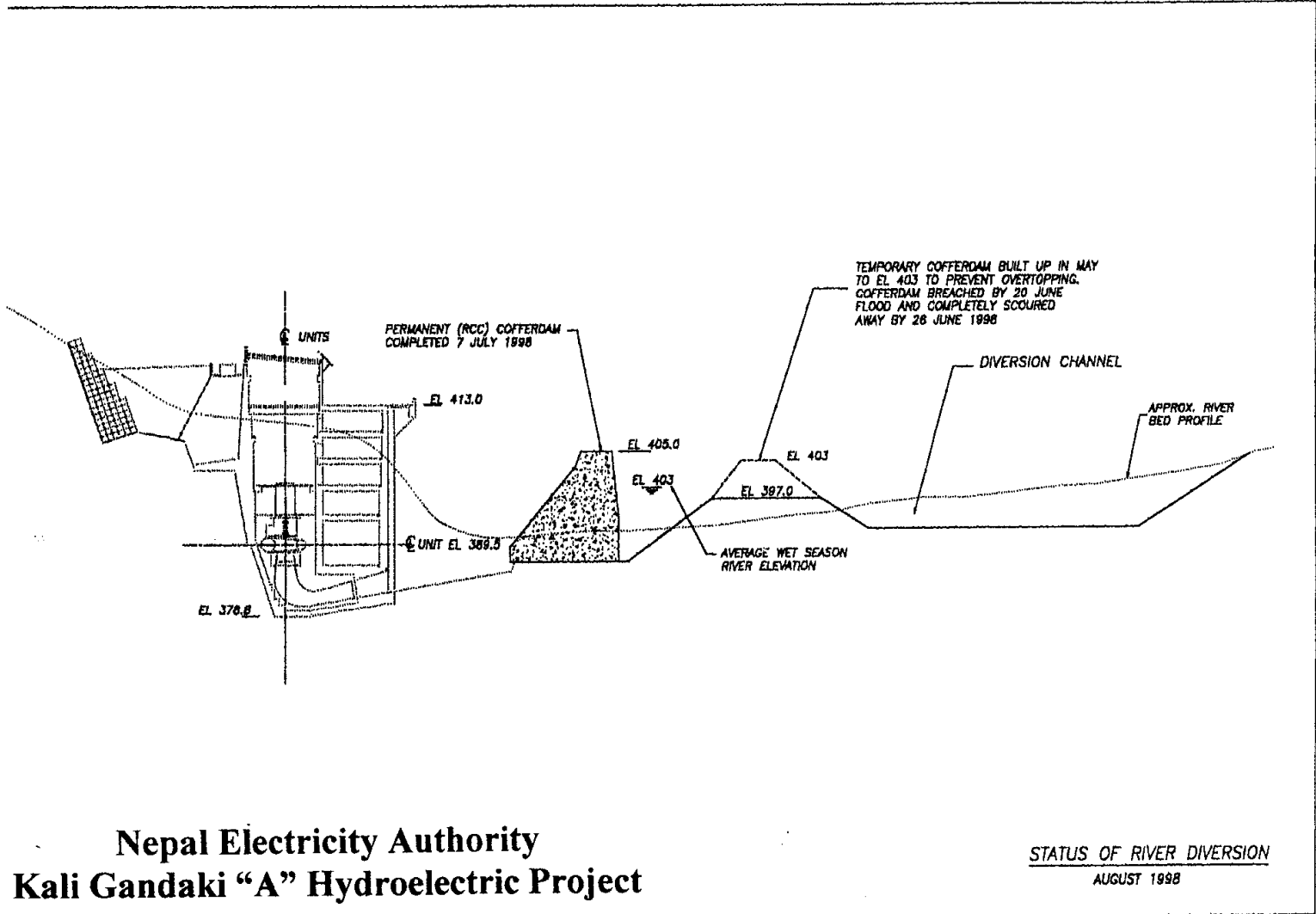
**Nepal Electricity Authority  
Kali Gandaki "A" Hydroelectric Project**

STATUS OF SURGE SHAFT AND PENSTOCK  
AUGUST 1998



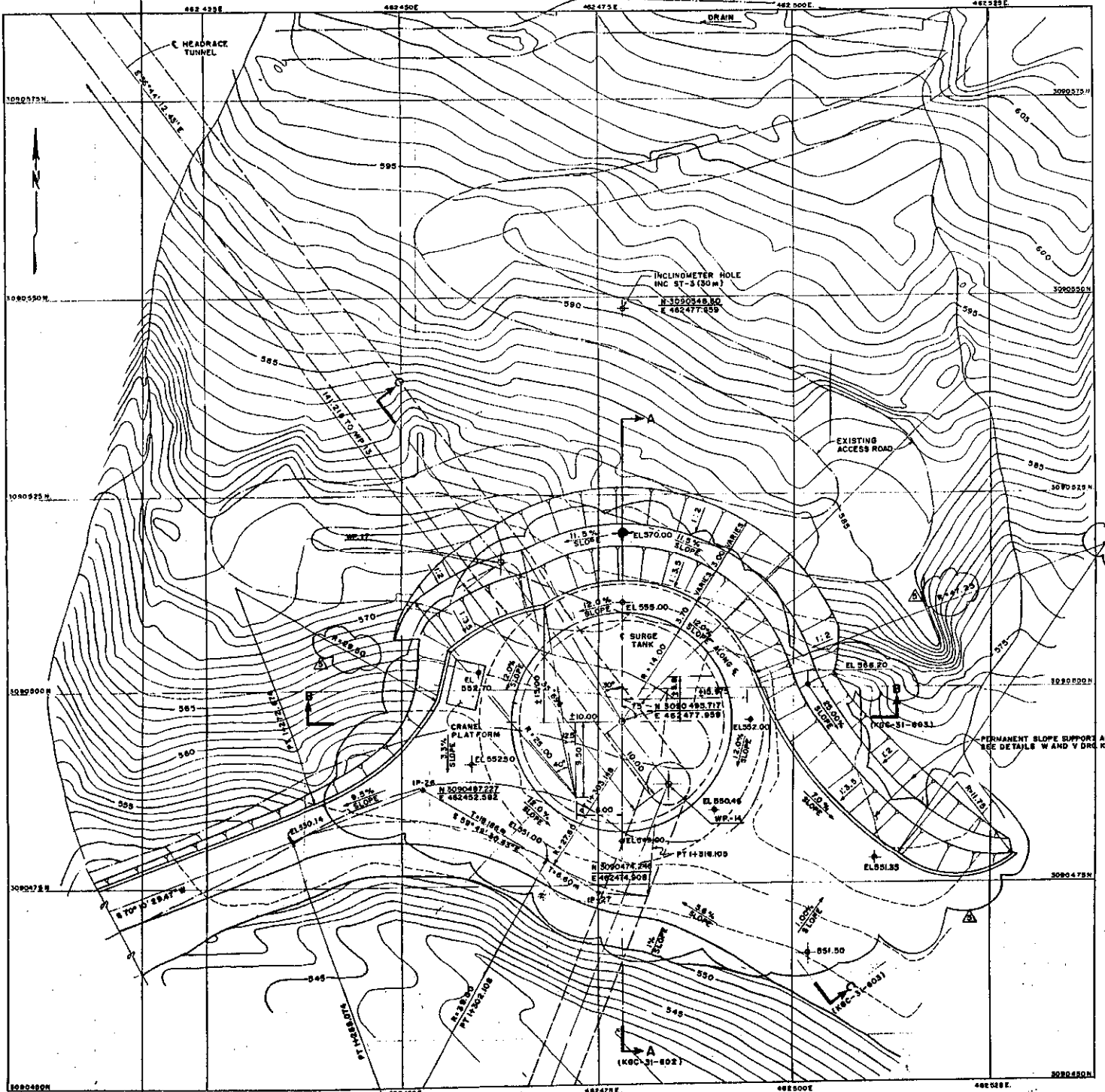
**Nepal Electricity Authority**  
**Kali Gandaki "A" Hydroelectric Project**

STATUS OF RIVER DIVERSION  
 MARCH 1993

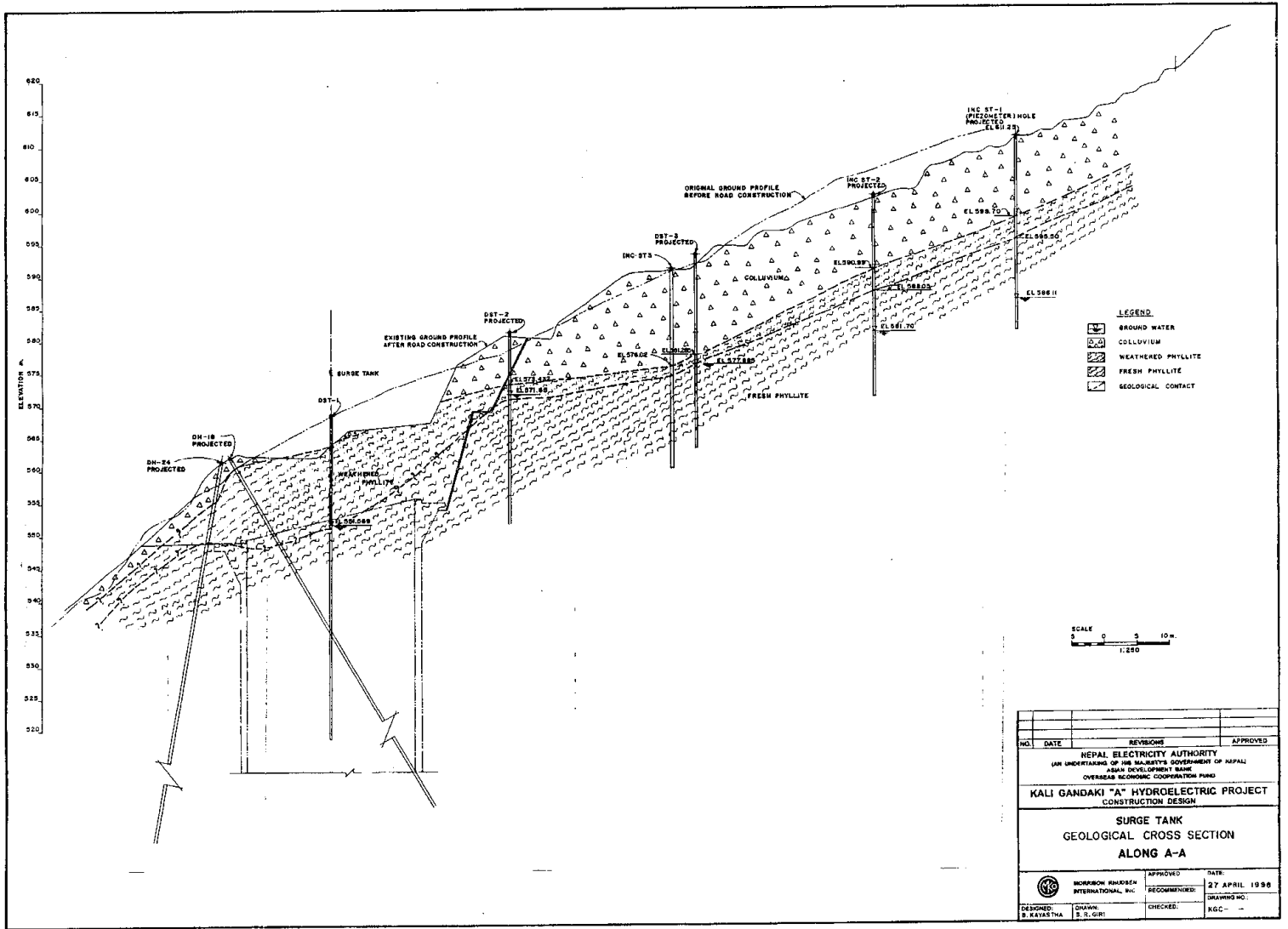


**Nepal Electricity Authority**  
**Kali Gandaki "A" Hydroelectric Project**

STATUS OF RIVER DIVERSION  
 AUGUST 1998



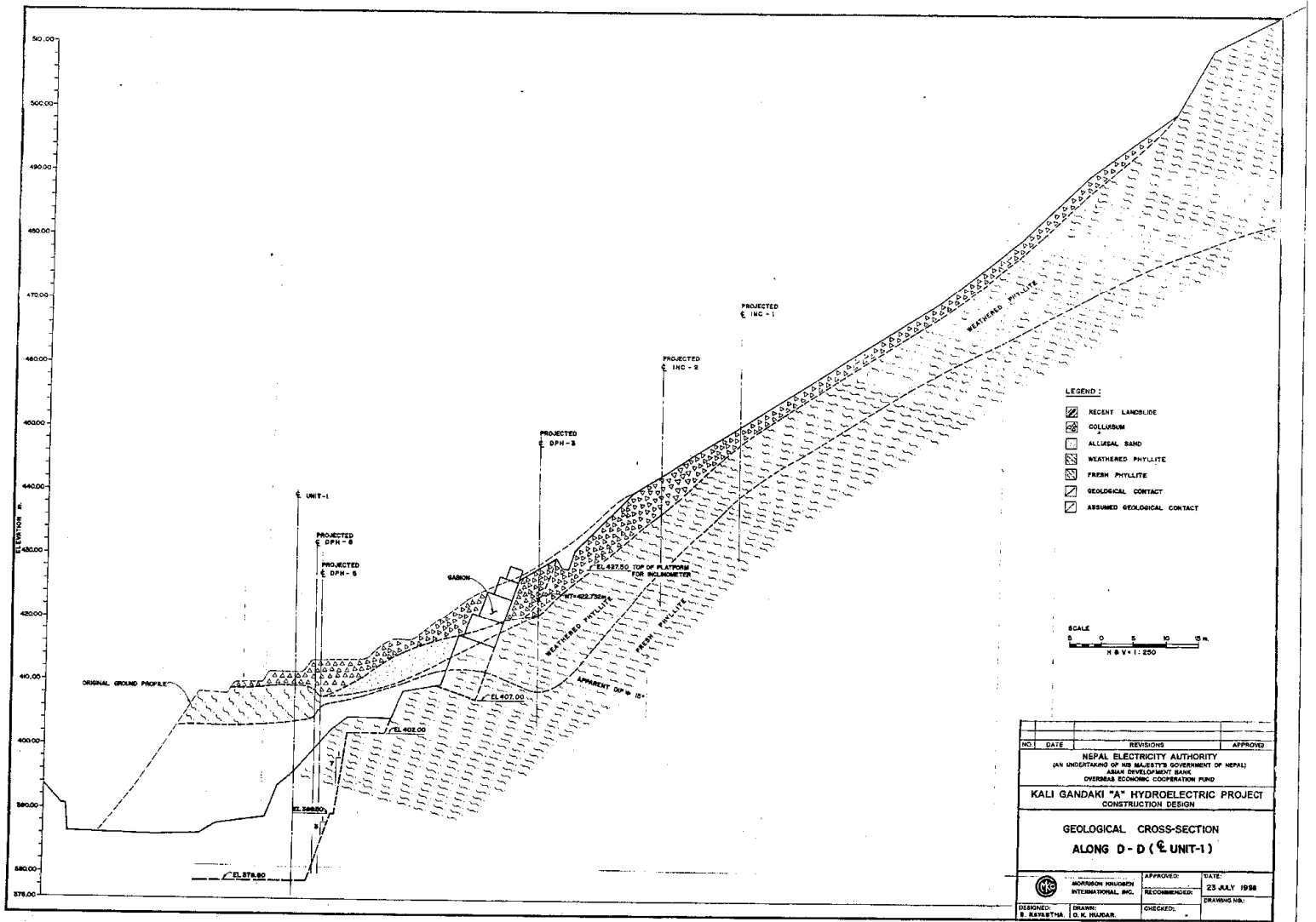
**Plan View of Surge Tank Cut Slope Excavation**



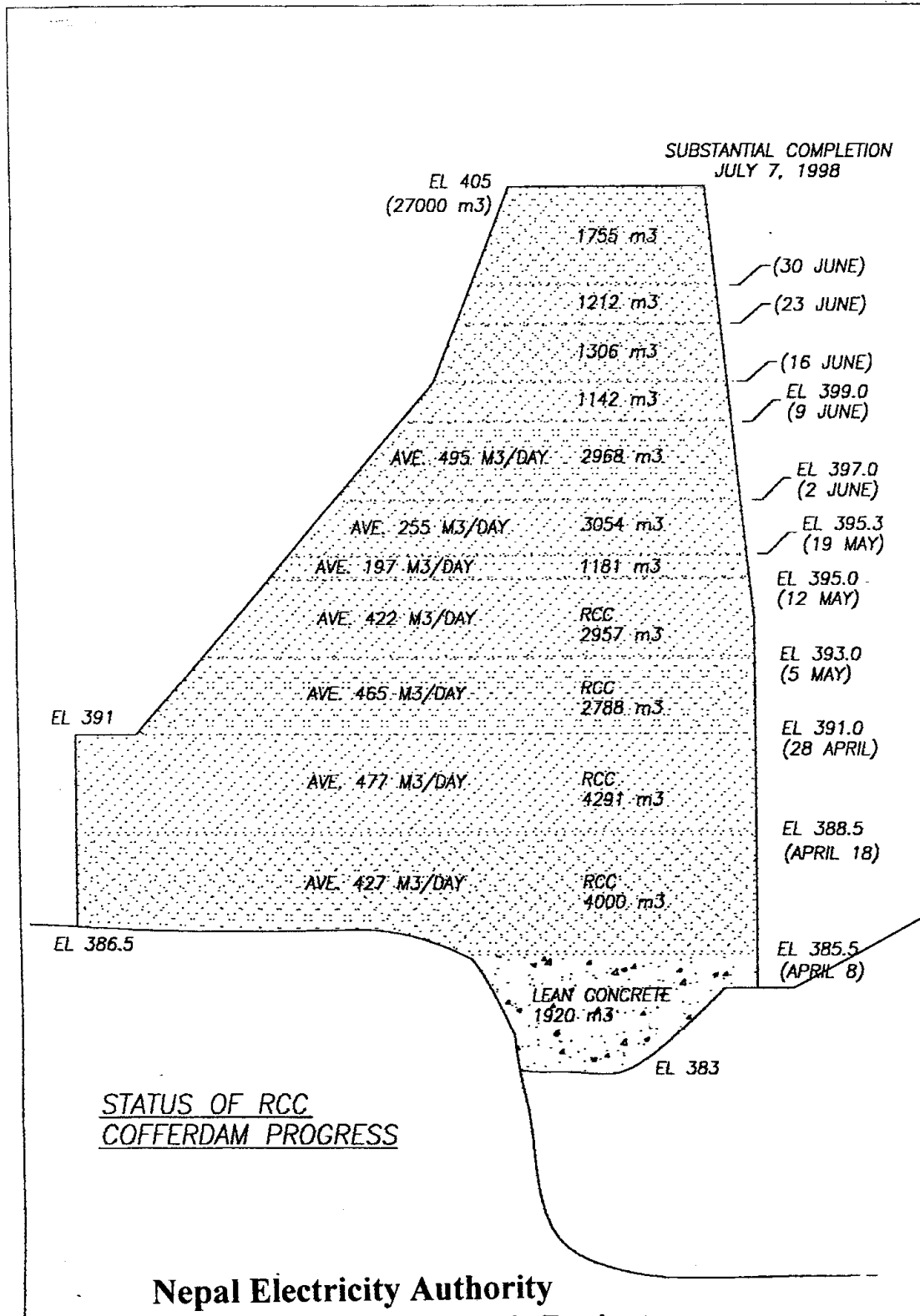
**Geological X-Section of Surge Tank Cut & Back Slope**



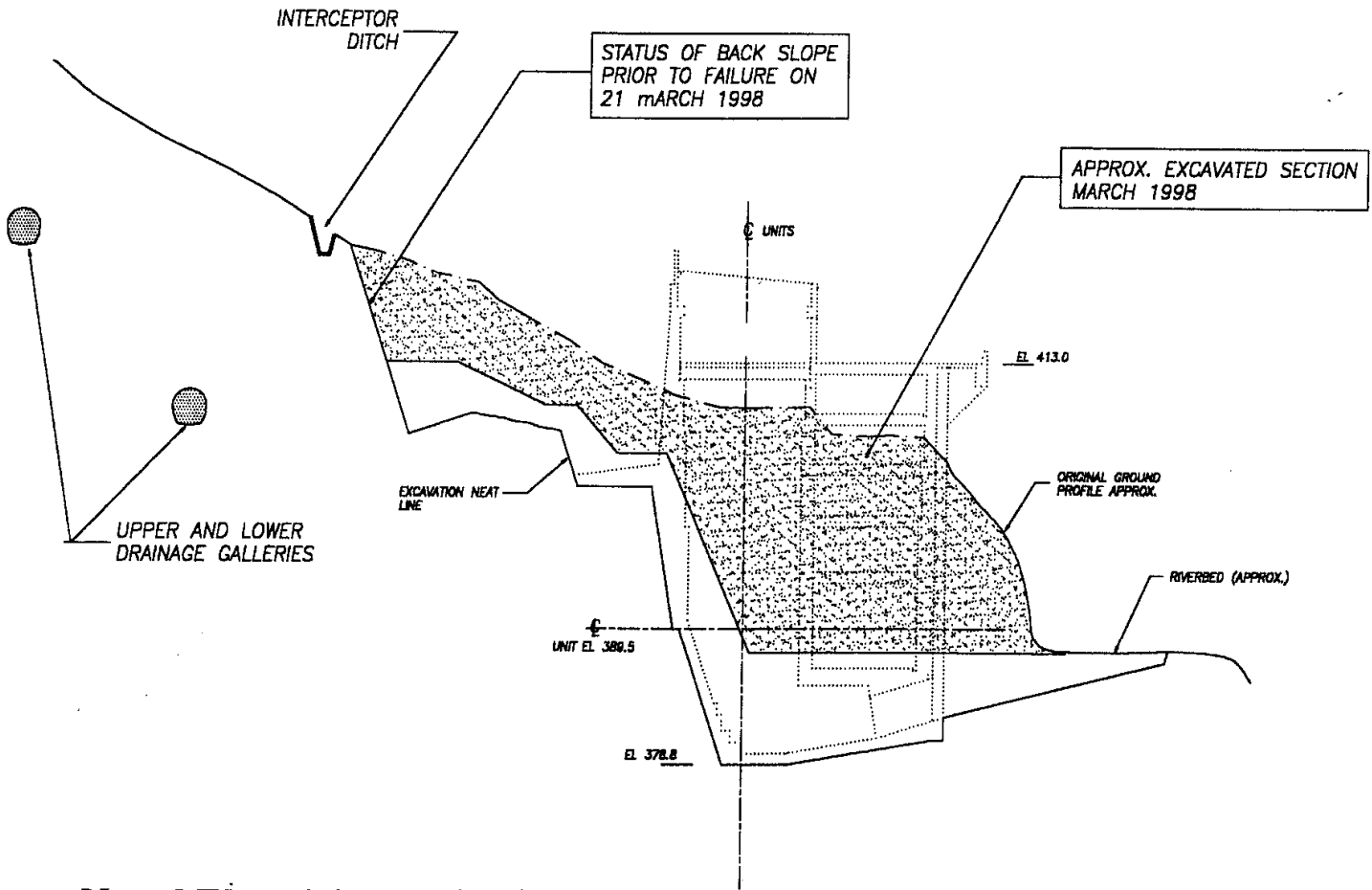
# Geological X-Section of Powerhouse Excavation & Back Slope







**Nepal Electricity Authority  
Kali Gandaki "A" Hydroelectric Project**



**Nepal Electricity Authority  
Kali Gandaki "A" Hydroelectric Project**

STATUS OF POWERHOUSE EXCAVATION  
MARCH 1998

BACK SLOPE EXCAVATION COMPLETE  
AFTER 21 MARCH SLIDE

UPPER AND LOWER  
DRAINAGE GALLERIES  
(NOT STARTED)

EXCAVATION HEAT  
LINE

UNIT EL 389.5

EL 378.8

EL 413.0

ORIGINAL GROUND  
PROFILE APPROX.

RIVERBED (APPROX.)

EXCAVATION COMPLETE FOR  
ERECTION BAY AND UNIT 3 AND  
PROGRESSED TO EL 386 FOR  
UNITS 1 AND 2

**Nepal Electricity Authority**  
**Kali Gandaki "A" Hydroelectric Project**

STATUS OF POWERHOUSE EXCAVATION  
AUGUST 1998

